

Speed Feedback Display - SFD



SOLAR or AC POWERED

ADVISORY CATEGORY OF SIGN FOR **EDUCATION** AND RE-ENFORCEMENT OF POSTED SPEED LIMIT

VAMP TIMER **AUTO ADJUST** FOR DAYLIGHT SAVINGS

7 x 5 DUAL DIGIT FULL MATRIX SPEED READOUT DISPLAY.

BLUETOOTH WIRELESS DATA-LOGGING SPEED ANALYSIS

FCC COMPLIANT SI-3 INTEGRATED RADAR TECHNOLOGY

GRP or **ALUMINIUM** LIGHTWEIGHT ROBUST ENCLOSURES



MODULAR DESIGN FOR EASY INSTALL, SET UP/SERVICE

HIGH INTENSITY LED DISPLAY **VISIBLE IN ALL AMBIENT LIGHT CONDITIONS** WITH AUTO LUMINOSITY CONTROL

MEETS MUTCD GUIDELINES

SIGN DESIGN SPECIFICATION (Generic)

| | | | | |
|---------------------------|---|------------------------------------|-------------------|--------------|
| Model Ref. | SFD/12/YS | | | |
| Display Technology | High Intensity LED. Auto luminosity control to suit ambient light conditions. | | | |
| Character Height | 6" 150mm (max viewing 240Ft) and 12" 320mm (Max Viewing 480Ft) options available | | | |
| Display Format | Speed readout is made up of 2 No 7x5 full character matrix ultra-bright LEDs. Character size options are available in both 6" (150mm) and 12" (320mm). Fixed header 4" (100mm) on SFD/6/YS 6" (150mm) on SFD/12/YS | | | |
| Vehicle Detection | FCC compliant K Band Si-3 technology , configurable trigger speeds between 5 to 120MPH, 6° beam with adjustable range from 350 to 1200 feet. | | | |
| Dimensions | Model No. | Approx Dimensions Inches/mm | | |
| | | Height | Width | Depth |
| | SFD/12/YS (12" (320mm) Speed Character readout , visible at ~480ft (160m) | 37/945 | 24/615 | 6/163 |
| | SFD/6/YS (6" (150mm) Speed Character readout, visible at ~240ft (80m) | 18/472 | 16/410 | 6/163 |
| | Two speed readout sizes are available to suit different conventional road speeds and viewing distances. The speed readout fixed header is available in either Yellow on Black or Black on Yellow as pictured above, incorporating diamond grade reflective material for high visibility and contrast. Two options of fixed legend are available YS ' YOUR SPEED' and SD ' SLOW DOWN' . Models are available with interchangeable slotted sign panels for rotating between school zone and regulatory posted speed limit deployment | | | |
| Weight | Approximate SFD/6/YS 5Kg 10lbs | SFD/12/YS 11Kg 22Lbs | Battery 5kg 10lbs | |

Speed Feedback Display - SFD

SPECIFICATION, continued...

Power Supply

Solar or AC powered. Solar Kit Designed to ensure 24/7/365 operation in accordance with average solar hours per day available at locations. Nominal 40 to 60W panels with 40 amphr battery reservoir integrated into sign.

Operation

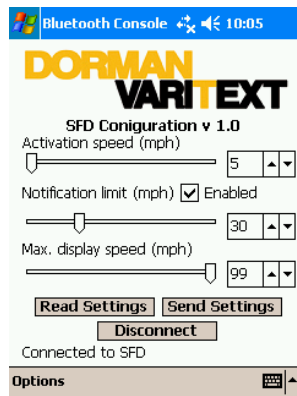
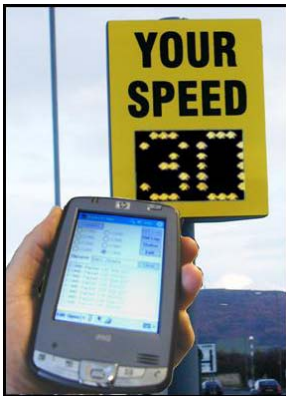
The SFD is configured for operation via the PDA custom software application over Bluetooth™ wireless communications. The configurable parameters are Activation Threshold speed, Speed Limit Violator Indication and Speed Display Cap. The display will solidly display speeds above the activation threshold and below the violator speed limit indication, above the speed limit indication the speed will flash to indicate violation of the limit. The speed cap blanks the display when a certain speed is recorded.

VAMP Timetable

VAMP is a desktop software package which allows the user to instruct the sign to operate in conjunction with a programmed timetable such as a School calendar. The switching timetable is produced in the desktop transferred to PDA and uploaded to sign via Bluetooth™ Wireless Communications.

Data logging Facility

Dorman Varitext's unique data logging software interfaces to the sign via a Bluetooth™ wireless connection to a hand held PDA. The data logging software records the date, time and speed of vehicles passing the sign; this information can be imported into Excel, to enable detailed analysis of, speeds and allow the client to evaluate the SFD performance. Data value is in before and after comparisons. Standard Storage capacity 11 million vehicles on SD memory card



| H10 | A | B | C | D |
|-----|------------|----------|-------|---|
| 1 | Date | Time | Speed | |
| 2 | 05/05/2008 | 12:05:01 | 25 | |
| 3 | 05/05/2008 | 12:05:02 | 21 | |
| 4 | 05/05/2008 | 12:05:04 | 25 | |
| 5 | 05/05/2008 | 12:05:08 | 25 | |
| 6 | 05/05/2008 | 12:05:09 | 25 | |
| 7 | 08/05/2008 | 12:05:20 | 24 | |
| 8 | 07/05/2008 | 12:05:35 | 26 | |
| 9 | 07/05/2008 | 12:05:55 | 32 | |
| 10 | 08/05/2008 | 12:07:45 | 31 | |
| 11 | 08/05/2008 | 12:08:05 | 45 | |
| 12 | 08/05/2008 | 12:08:05 | 25 | |
| 13 | 09/05/2008 | 12:09:45 | 25 | |
| 14 | 09/05/2008 | 12:09:55 | 24 | |
| 15 | | | | |
| 16 | | | | |
| 17 | | | | |
| 18 | | | | |
| 19 | | | | |
| 20 | | | | |
| 21 | | | | |
| 22 | | | | |
| 23 | | | | |
| 24 | | | | |
| 25 | | | | |
| 26 | | | | |
| 27 | | | | |
| 28 | | | | |
| 29 | | | | |
| 30 | | | | |
| 31 | | | | |
| 32 | | | | |
| 33 | | | | |
| 34 | | | | |
| 35 | | | | |
| 36 | | | | |
| 37 | | | | |
| 38 | | | | |
| 39 | | | | |
| 40 | | | | |
| 41 | | | | |
| 42 | | | | |
| 43 | | | | |
| 44 | | | | |
| 45 | | | | |
| 46 | | | | |
| 47 | | | | |
| 48 | | | | |
| 49 | | | | |
| 50 | | | | |
| 51 | | | | |
| 52 | | | | |
| 53 | | | | |
| 54 | | | | |
| 55 | | | | |
| 56 | | | | |
| 57 | | | | |
| 58 | | | | |
| 59 | | | | |
| 60 | | | | |
| 61 | | | | |
| 62 | | | | |
| 63 | | | | |
| 64 | | | | |
| 65 | | | | |
| 66 | | | | |
| 67 | | | | |
| 68 | | | | |
| 69 | | | | |
| 70 | | | | |
| 71 | | | | |
| 72 | | | | |
| 73 | | | | |
| 74 | | | | |
| 75 | | | | |
| 76 | | | | |
| 77 | | | | |
| 78 | | | | |
| 79 | | | | |
| 80 | | | | |
| 81 | | | | |
| 82 | | | | |
| 83 | | | | |
| 84 | | | | |
| 85 | | | | |
| 86 | | | | |
| 87 | | | | |
| 88 | | | | |
| 89 | | | | |
| 90 | | | | |
| 91 | | | | |
| 92 | | | | |
| 93 | | | | |
| 94 | | | | |
| 95 | | | | |
| 96 | | | | |
| 97 | | | | |
| 98 | | | | |
| 99 | | | | |
| 100 | | | | |
| 101 | | | | |
| 102 | | | | |
| 103 | | | | |
| 104 | | | | |
| 105 | | | | |
| 106 | | | | |
| 107 | | | | |
| 108 | | | | |
| 109 | | | | |
| 110 | | | | |
| 111 | | | | |
| 112 | | | | |
| 113 | | | | |
| 114 | | | | |
| 115 | | | | |
| 116 | | | | |
| 117 | | | | |
| 118 | | | | |
| 119 | | | | |
| 120 | | | | |
| 121 | | | | |
| 122 | | | | |
| 123 | | | | |
| 124 | | | | |
| 125 | | | | |
| 126 | | | | |
| 127 | | | | |
| 128 | | | | |
| 129 | | | | |
| 130 | | | | |
| 131 | | | | |
| 132 | | | | |
| 133 | | | | |
| 134 | | | | |
| 135 | | | | |
| 136 | | | | |
| 137 | | | | |
| 138 | | | | |
| 139 | | | | |
| 140 | | | | |
| 141 | | | | |
| 142 | | | | |
| 143 | | | | |
| 144 | | | | |
| 145 | | | | |
| 146 | | | | |
| 147 | | | | |
| 148 | | | | |
| 149 | | | | |
| 150 | | | | |
| 151 | | | | |
| 152 | | | | |
| 153 | | | | |
| 154 | | | | |
| 155 | | | | |
| 156 | | | | |
| 157 | | | | |
| 158 | | | | |
| 159 | | | | |
| 160 | | | | |
| 161 | | | | |
| 162 | | | | |
| 163 | | | | |
| 164 | | | | |
| 165 | | | | |
| 166 | | | | |
| 167 | | | | |
| 168 | | | | |
| 169 | | | | |
| 170 | | | | |
| 171 | | | | |
| 172 | | | | |
| 173 | | | | |
| 174 | | | | |
| 175 | | | | |
| 176 | | | | |
| 177 | | | | |
| 178 | | | | |
| 179 | | | | |
| 180 | | | | |
| 181 | | | | |
| 182 | | | | |
| 183 | | | | |
| 184 | | | | |
| 185 | | | | |
| 186 | | | | |
| 187 | | | | |
| 188 | | | | |
| 189 | | | | |
| 190 | | | | |
| 191 | | | | |
| 192 | | | | |
| 193 | | | | |
| 194 | | | | |
| 195 | | | | |
| 196 | | | | |
| 197 | | | | |
| 198 | | | | |
| 199 | | | | |
| 200 | | | | |
| 201 | | | | |
| 202 | | | | |
| 203 | | | | |
| 204 | | | | |
| 205 | | | | |
| 206 | | | | |
| 207 | | | | |
| 208 | | | | |
| 209 | | | | |
| 210 | | | | |
| 211 | | | | |
| 212 | | | | |
| 213 | | | | |
| 214 | | | | |
| 215 | | | | |
| 216 | | | | |
| 217 | | | | |
| 218 | | | | |
| 219 | | | | |
| 220 | | | | |
| 221 | | | | |
| 222 | | | | |
| 223 | | | | |
| 224 | | | | |
| 225 | | | | |
| 226 | | | | |
| 227 | | | | |
| 228 | | | | |
| 229 | | | | |
| 230 | | | | |
| 231 | | | | |
| 232 | | | | |
| 233 | | | | |
| 234 | | | | |
| 235 | | | | |
| 236 | | | | |
| 237 | | | | |
| 238 | | | | |
| 239 | | | | |
| 240 | | | | |
| 241 | | | | |
| 242 | | | | |
| 243 | | | | |
| 244 | | | | |
| 245 | | | | |
| 246 | | | | |
| 247 | | | | |
| 248 | | | | |
| 249 | | | | |
| 250 | | | | |
| 251 | | | | |
| 252 | | | | |
| 253 | | | | |
| 254 | | | | |
| 255 | | | | |
| 256 | | | | |
| 257 | | | | |
| 258 | | | | |
| 259 | | | | |
| 260 | | | | |
| 261 | | | | |
| 262 | | | | |
| 263 | | | | |
| 264 | | | | |
| 265 | | | | |
| 266 | | | | |
| 267 | | | | |
| 268 | | | | |
| 269 | | | | |
| 270 | | | | |
| 271 | | | | |
| 272 | | | | |
| 273 | | | | |
| 274 | | | | |
| 275 | | | | |
| 276 | | | | |
| 277 | | | | |
| 278 | | | | |
| 279 | | | | |
| 280 | | | | |
| 281 | | | | |
| 282 | | | | |
| 283 | | | | |
| 284 | | | | |
| 285 | | | | |
| 286 | | | | |
| 287 | | | | |
| 288 | | | | |
| 289 | | | | |
| 290 | | | | |
| 291 | | | | |
| 292 | | | | |
| 293 | | | | |
| 294 | | | | |
| 295 | | | | |
| 296 | | | | |
| 297 | | | | |
| 298 | | | | |
| 299 | | | | |
| 300 | | | | |
| 301 | | | | |
| 302 | | | | |
| 303 | | | | |
| 304 | | | | |
| 305 | | | | |
| 306 | | | | |
| 307 | | | | |
| 308 | | | | |
| 309 | | | | |
| 310 | | | | |
| 311 | | | | |
| 312 | | | | |
| 313 | | | | |
| 314 | | | | |
| 315 | | | | |
| 316 | | | | |
| 317 | | | | |
| 318 | | | | |
| 319 | | | | |
| 320 | | | | |
| 321 | | | | |
| 322 | | | | |
| 323 | | | | |
| 324 | | | | |
| 325 | | | | |
| 326 | | | | |
| 327 | | | | |
| 328 | | | | |
| 329 | | | | |
| 330 | | | | |
| 331 | | | | |
| 332 | | | | |
| 333 | | | | |
| 334 | | | | |
| 335 | | | | |
| 336 | | | | |
| 337 | | | | |
| 338 | | | | |
| 339 | | | | |
| 340 | | | | |
| 341 | | | | |
| 342 | | | | |
| 343 | | | | |
| 344 | | | | |
| 345 | | | | |
| 346 | | | | |
| 347 | | | | |
| 348 | | | | |
| 349 | | | | |
| 350 | | | | |
| 351 | | | | |
| 352 | | | | |
| 353 | | | | |
| 354 | | | | |
| 355 | | | | |
| 356 | | | | |
| 357 | | | | |
| 358 | | | | |
| 359 | | | | |
| 360 | | | | |
| 361 | | | | |
| 362 | | | | |
| 363 | | | | |
| 364 | | | | |
| 365 | | | | |
| 366 | | | | |
| 367 | | | | |
| 368 | | | | |
| 369 | | | | |
| 370 | | | | |
| 371 | | | | |
| 372 | | | | |
| 373 | | | | |
| 374 | | | | |
| 375 | | | | |
| 376 | | | | |
| 377 | | | | |
| 378 | | | | |
| 379 | | | | |
| 380 | | | | |
| 38 | | | | |