

# Advanced Hazard Warning - VATCS



**SOLAR** or AC POWERED

ADVISORY CATEGORY OF SIGN FOR **EDUCATION** OF DRIVER TOWARDS SAFE SPEED FOR MAENOUVERING APPROACHING HAZARD

PIXELATED LED DISPLAY COMPLIANT AND INCLUDING MOST **MUTCD WARNING SIGN DIAGRAMS**.

**BLUETOOTH** WIRELESS DATA-LOGGING SPEED ANALYSIS

**FCC COMPLIANT** SI-3 INTEGRATED RADAR TECHNOLOGY

**ALUMINIUM** LIGHTWEIGHT ROBUST ENCLOSURES

**INDEPENDENTLY PROVEN** TRACK RECORD AT LOWERING APPROACH SPEEDS BY UP TO 7MPH



**MODULAR DESIGN** FOR EASY INSTALL, SET UP/SERVICE

HIGH INTENSITY LED DISPLAY **VISIBLE IN ALL AMBIENT LIGHT CONDITIONS** WITH AUTO LUMINOSITY CONTROL

## SIGN DESIGN SPECIFICATION (Generic)

<b>Model Ref.</b>	VATCS/Sign Ref, Speed/SD slow down/L lanterns/ DL data logging		
<b>Display Technology</b>	High Intensity LED. Auto luminosity control to suit ambient light conditions.		
<b>Display format</b>	Majority of 24" to 48" MUTCD warning diagrams available as standard. Visible at 480 to 960". Display colours are inverted from the MUTCD regulatory sign diagrams . 5" 125mm beacons are located in each corner , flashing in horizontal pairs to attract drivers attention. Slow Down Featured beneath warning diagram		
<b>Vehicle Detection</b>	FCC compliant K Band Si-3 technology , configurable trigger speeds between 5MPH/8KPH to 120MPH/192KPH, 12° beam with adjustable range from 350 to 1200 feet. Standard 600'.		
<b>Models</b>	<b>Model No.</b>	<b>Approx Dimensions Inches/mm</b>	
		<b>Height</b>	<b>Width</b>
		<b>Depth</b>	
	VATCS/Sign ref/SD/L/DL (US) (24")	59/1510	34/875
	VATCS/Sign ref/SD/L/DL (CAN) (60cm)	59/1510	34/875
	Larger versions of sign are available on request. Dual Warning diagram versions available for moving sign from one hazard to another, i.e. left to right curve location. Specific warning signs in accordance with MUTCD with or without slow down and lanterns. Size to be quoted when ordering.		
<b>Weight</b>	45Kg 90lbs		

# Advance Hazard Warning - VATCS

### SPECIFICATION, continued...

#### Power Supply

Solar or AC powered. Solar Kit Designed to ensure 24/7/365 operation in accordance with average solar hours per day available at locations. Nominal 80W panels with 36 amp/hr battery reservoir integrated into sign.

#### Operation

The display will operate as a secret sign in vehicle activated mode, only displaying the warning when a vehicle approaches the sign exceeding the pre-configured speed limit (adjustable on site). Sign is available with and without Slow Down legend and Lanterns. The amber lanterns flash alternately in horizontal pairs, and the warning is illuminated while the vehicle continues to travel in excess of the activation speed, or for a default timeout period. As the warning relates to hazard and not speed limit the sign threshold may be set lower than the speed limit to suit road conditions for the hazard. Getting the driver to drive to road conditions is what this sign is all about. Signs should be positioned at least 300 feet in advance of the hazard to allow driver to adjust speed if necessary.

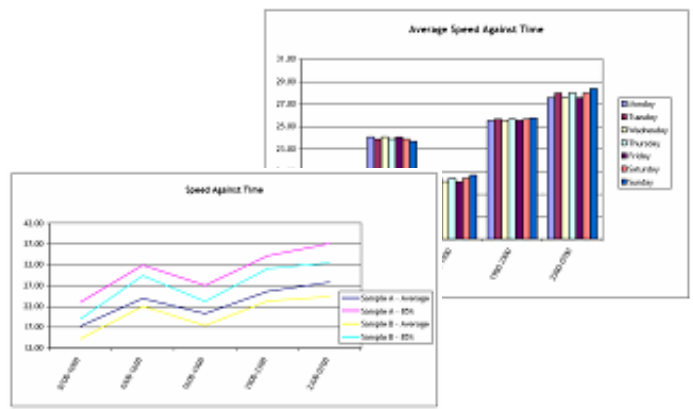
#### Data logging Facility

Dorman Varitext's unique data logging software interfaces to the sign via a Bluetooth™ wireless connection to a hand held PDA. The data logging software records the date, time and speed of vehicles passing the sign; this information can be imported into Excel, to enable detailed analysis of, speeds and allow the client to evaluate the VATCS performance. Data value is in before and after comparisons. Standard Storage capacity 11 million vehicles on SD memory card

### Log and analyse traffic flow and speed data with VATCS Datalogger© Software...



Date	Time	Speed
05/05/2005	12:05:01	23
05/05/2005	12:05:02	21
05/05/2005	12:05:04	26
05/05/2005	12:05:08	23
06/05/2005	12:05:20	24
07/05/2005	12:05:35	28
07/05/2005	12:06:05	32
08/05/2005	12:07:05	30
08/05/2005	12:08:05	46
09/05/2005	12:09:05	26
09/05/2005	12:09:45	25
09/05/2005	12:09:55	24
Mean of average speed =		27.06333333
95th Percentile =		30.9



### ENCLOSURE

#### Outdoor Application

Purpose fabricated lightweight, robust, vandal resistant, weatherproof enclosure. -35 to 74°C operating temperature range.

#### Enclosure

Corrosion resistant purpose fabricated lightweight Aluminum enclosure, hinged front door for access with vandal tamperproof shape locks. Color finish to suit.

#### Mounting



#### Permanent Mounting Option

As standard the VATCS has four sign fix channels running the full rear width of the sign, each sign is supplied with 4 No SX0220 channel banding adaptors to allow clients to band mount onto any existing post. Solar Panel is supplied complete with mounting bracket for either side or top of pole mounting.

#### Window

¼ inch/5mm vandal resistant polycarbonate.